



NEWSLETTER

The Queen's C of E Primary School

Encouraging every child to reach their full potential, nurtured and supported in a Christian community, which lives by the values of love, compassion and respect.



15th January 2021

Please click on a link below to go directly to an item.

[A Message from Ms Stroud & Ms Demetriou](#)

[COVID 19 updates](#)

[Wellbeing Focus](#)

[Safeguarding](#)

[A Big Hand for the Year 1 Team!](#)

[Google Classroom Helpful Hints for Parents](#)

[Remote Learning](#)

[Year 1 Photos From Home](#)

[Year 3 Go In Search The Truth About Trolls!](#)

[Year 3 Feel the Force!](#)

[Thank You from SPEAR](#)

[Raise Money for The Queen's School Whilst Shopping](#)

A Message from Ms Stroud & Ms Demetriou

Dear Queen's families,

As we end our second week of the Spring Term, we look forward with hope to after half term when we may all be back together again. We understand how difficult this time is for all our families, in managing working from home, supporting remote learning and keeping everyone in a positive frame of mind.

The photos in the newsletter show what amazing learning children are doing at home and at school. Our teachers are delighted with the positive enthusiasm the children are bringing to their learning on Google Classroom and thank you for all the support you are giving your children.

Even though the weather is wet and cold we encourage everyone to fit in some physical outdoor exercise and ensure you build in regular exercise breaks during the day. We will be adding some ideas to our Google Classrooms.

Sometimes we need a little support to help us through difficult times, so we have put some more information about [wellbeing](#) in this newsletter and draw your attention to the [Emotional Health Service Resource Hub](#), which has some useful videos and links to other websites that could provide support.

We have also included a few hints and tips for when your children are using Google Classroom (see below). We will be sending out a questionnaire seeking your feedback in the near future and welcome parent feedback to guide us in supporting you and your children with remote learning.

Safeguarding our families is paramount at this time, when most children are not in school. If you need advice or support, please do look at the [contacts below](#).

In collective worship this week Father Nigel talked about how when we accept Jesus into our hearts and lives things can only be blessed, new, creative and loving and he shared a prayer:

Heavenly Father,

We thank you for the gift of your holy scriptures

We thank you that through the words of the scriptures we find knowledge and understanding

We thank you for the gift of baptism and the new life baptism gives us.

*Heavenly father we also pray at this time for the world and for those who are suffering,
as a result of this pandemic.*

We remember all those who seek to heal the sick.

We pray for our families, our friends and our school as we look forward to the day we can meet up again.

Amen

We wish everyone a healthy weekend and thank you for keeping our community as safe as possible by following the government lockdown guidance and rules.

Kind Regards,

Ms Demetriou & Ms Stroud –Turp Co – Headteachers

Ms Wilson – Assistant Head

[back to top](#)

COVID 19 UPDATES

Department for Education coronavirus (COVID-19) helpline opening hours

The Department for Education coronavirus (COVID-19) helpline remains available to answer questions about coronavirus (COVID-19) relating to education and children's social care. Please listen carefully to the available options and select the most appropriate to your current situation.

Parents can contact this helpline by calling: Phone: 0800 046 8687

**Opening hours: Monday to Friday from 8am to 6pm
Saturday and Sunday from 10am to 4pm**

Reporting COVID 19 information to school

It is extremely important that as a school we are kept up to date on sickness and COVID information. If you/member of your family has COVID symptoms, is seeking a COVID test, or has a positive COVID test result, please call/email the school as soon as possible for us to be able to fulfil our duty of care to other pupils and families.

The email for informing the school of all sickness/ COVID information is: absence@queens.richmond.sch.uk
please enter COVID 19 in the subject box.

Out of hours reporting:

If you have information to report outside school hours, including weekends, please email, absence@queens.richmond.sch.uk rather than phone the school as this e-mail box is looked at regularly out of school hours.

Government Guidance for parents and carers

- [Changes to schools and education during the coronavirus outbreak](#)
- [Schools and childcare providers staying open for critical workers](#)
- [Supporting your children's education during coronavirus \(COVID-19\)](#)
- [What parents and carers need to know about early years providers, schools and colleges in the autumn term](#)

[back to top](#)

Wellbeing Focus

We know it can be hard at this time – you are acting in many roles and may need further advice and support. It is of utmost importance that you and your children are well and happy. This can be tricky when home working and learning is all happening and the usual forms of stress release and entertainment are not available. Sometimes we need a little support to help us through, AfC have an excellent [Emotional Health Service Resource Hub](#) with some really useful videos and links to other websites that could provide support, we've selected some below but there are so many more for you to explore.

Parenting Advice:

<https://maudsleycharity.org/familiesunderpressure/>

<https://kr.afcinfo.org.uk/pages/community-information/information-and-advice/parenting-support/parent-carer-training-courses>

Free Family Lives helpline:

<https://www.familylives.org.uk/how-we-can-help/confidential-helpline/>

Relate also offer a range of services:

<https://www.relate.org.uk/relationship-help/help-family-life-and-parenting>

<https://www.relate.org.uk/relationship-help/talk-someone>

5 Ways of Wellbeing:



Children and young people also need regular play and creativity.

(More on this can be found: <https://kr.afcinfo.org.uk/pages/young-people/information-and-advice/emotional-health-service/resource-hub/growth-mindset-programme/primary-growth-mindset-programme>)

[back to top](#)

Safeguarding

Designated Safeguarding Leads: Co- Headteachers - Ms Voulla Demetriou & Ms Jenny Stroud-Turp

Deputy Safeguarding Leads: - Ms Hilary Wilson (Assistant Head) & Ms Polly Watkinson (Senco)

If you are concerned about a child's well-being you can make a referral or seek advice from Richmond
Single Point of Access - 0208 547 5008

Out of Hours Duty Social Worker

0208 770 5000

National Domestic Violence Helpline

0808 2000 247

[back to top](#)

A Big Hand for the Year 1 Team!



You may remember last year Ms Crampton ran an art project asking everyone in school to create a “handprint” from a template. Well, after a couple of incarnations (and Ms Crampton completing her work at height training!) the full installation has been revealed in the school hall. Over the Christmas break, the Year 1 team (Ms Crampton, Ms Melville Thomas and Ms Burtenshaw-Grant) worked hard to create the fabulous rainbow of hand prints you can see here. Fantastic work!



[back to top](#)

Google Classroom Helpful Hints for Parents

Class video calls

- Please remember that you can only access the Google Classroom video calls when logged into your child’s Google Classroom account.
- Those requesting access from outside Google Classroom will not be granted permission.
- Please encourage your child to mute when they enter the meeting and particularly during key teaching / instructions. They can unmute when requested.
- It is possible to ‘pin’  the teacher(s) during a meeting, so your child is not distracted by others. Only one teacher can be ‘pinned’ at once.
- Whilst it is lovely to see children during these meetings, it is also possible to join with audio only.
- Teachers may set ‘polls’ during the Meet – these can be accessed by clicking on this icon  and tapping ‘polls’. Unfortunately, these can’t be accessed yet from an iPad but nothing important will be missed!

If you are struggling with limited devices at home, Google Classroom works via games console (e.g. Xbox or play station) and a Smart TV provided they have a web browser built in and they are connected to the

internet. This could be useful for children to access video meetings or watch set learning videos. If it's possible to add an USB keyboard then this would make the process even easier.

Handing in work

- When sending in a photo of any work, please try to send it in the correct orientation.
- Even if you are not uploading a photo or attaching work, it is still useful if you can click 'Hand In/ Turn In' when an assignment has been completed so teachers can see that work is being accessed by the children.
-

You'll find documentation and videos on using Google Classroom and accessing the classroom meets here:

[Using Google Classroom for Parent & Pupils](#)

Please note that these documents and videos have been distributed via ParentMail

[back to top](#)

Remote Learning

Our remote/home learning has been well received and we continue to develop the process in our second week.

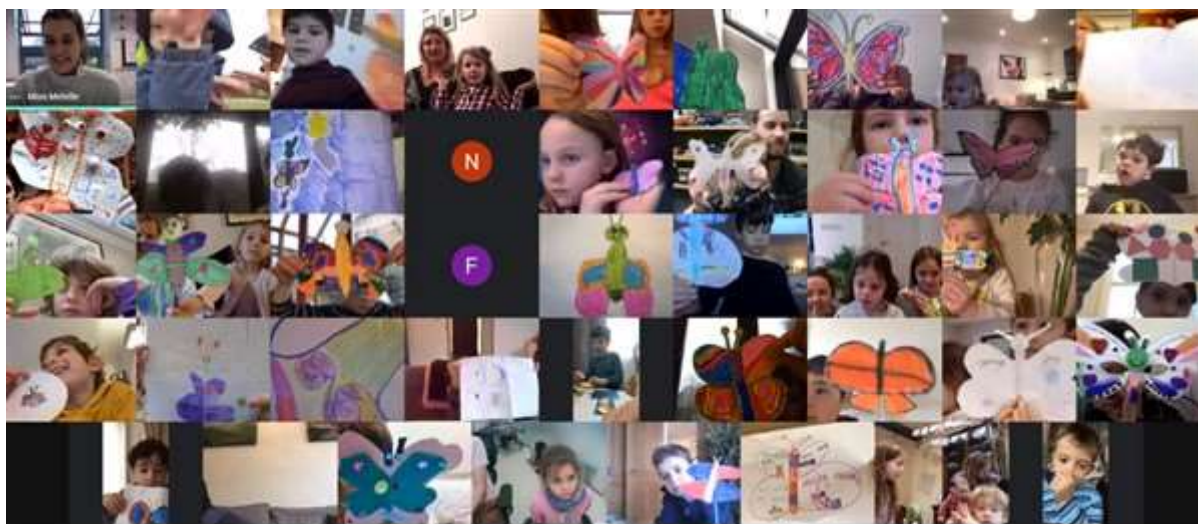
Our twice daily year group meetings through Google Classroom are highly successful and are enjoyed by children and staff alike. We realise that scheduling may be difficult for some families but due to safeguarding reasons, these meetings can't be recorded for later playback.

Year 1

Year 1 have been displaying their butterflies and kites that they've made.

The butterflies to help us remember that it is ok to feel worried, but that there are always ways we can feel better and people we can ask for help – they were all beautifully made and coloured.

The kites were part of our English and we used lots of rhyming words to decorate them.





Year 2

Year 2 Class Meets 1: the children holding up paper or fingers to show their answer to our question about vocabulary.

Year 2 Class Meets 2: the children using the 'hands up' feature to correct the sentence Mrs Corpetti is holding up.

Great work Year 2!





Year 5

Year 5 have had a storming start to their Home Learning! We have been busy learning about angles in Maths, writing some amazingly descriptive Portal stories in English. We also started our Rivers topic and looked at Miracles in R.E. amongst other things. It has been brilliant coming together on our Google Meets - we've shared our learning and had a giggle with each other. We've been so impressed with the standard of work coming in - be proud of yourselves, Year 5.



[back to top](#)

Year 1 Photos From Home

You've shared lots of exciting learning with us from home – remember to keep posting to your Classroom gallery so that we include them in the newsletter.

This week we are showcasing some learning from Year 1.



Here's Evie hard at work practicing phonics



Lucas putting maths into practice to measure how high he jumps!



Here's Jim's version of how it started and how it ended, let's hope you put it back together again Jim!



Year 1 have been investigating shapes in Maths and Taya is busy creating shadow shapes with her mum.

[back to top](#)

Year 3 Go In Search The Truth About Trolls!

In English Year 3 have been using investigating adjectives to help Dr Folklore write “The Truth About Trolls. Afterwards they created some Troll collages in school and at home!



[back to top](#)

Year 3 Feel the Force!

We have been investigating friction using floor surfaces in the classroom. Can you see how careful we were to make our test fair and measure really carefully?



[back to top](#)

Thank You from SPEAR

Last term's mufti day collections for Harvest and Kew sparkle raised just over £1100.00! We donated £903.00 to SPEAR and £200.00 to Kew Sparkle. Thank you for supporting these worthwhile causes.



30 YEARS
SPEAR
homelessness to independence

Thank you!

**To all at The Queen's C of E Primary School
for your generous donation of £903
With very best wishes from all the staff,
clients and trustees of SPEAR.**

**To enable homeless people to access accommodation, and
those at risk of homelessness to maintain their
accommodation.
To support all our service users to the point that they no
longer need us.**

Charity Reg. No. 1122206

E: fundraising@spearlondon.org

www.spearlondon.org

[back to top](#)

Raise Money for The Queen's School Whilst Shopping Online

Thank you to those of you who signed up to Easyfundraising and used Amazon Smile for your Christmas shopping. Just a reminder that these function throughout the year so please continue to use them.

The PSA & School Governing Body

AMAZON SMILE

AmazonSmile is a website operated by Amazon with the same products, prices, and shopping features as Amazon.com. The difference is that when you shop on AmazonSmile, the AmazonSmile Foundation will donate 0.5% of the purchase price to the chosen charity.

On your first visit to the site, you will be asked to log in to your Amazon account with existing username and password (you do not need a separate account for AmazonSmile). You will then be prompted to choose a charity to support. During future visits to the site, AmazonSmile will remember your charity and apply eligible purchases towards your total contribution—it is that easy!

The link below will set you up immediately with Queens as your chosen beneficiary.

<https://smile.amazon.co.uk/ch/283103-0>

EASYFUNDRAISING

This site works in a similar way to AmazonSmile but for many more online retailers such as John Lewis (2% transaction value), M&S (1.5%), Argos, Sainsbury, eBay, booking.com and many more. So long as you enter those sites via Easyfundraising the PSA will get a % of your transaction value.

<https://www.easyfundraising.org.uk/causes/queensprimary/>

Follow the link above.

Click on 'Support this cause'.

Then you need to set up an account, and shop via the home page from then on.

[back to top](#)